



STATE OPERA STARA ZAGORA

Stara Zagora 6000, 30 M. M. Kusev Blvd.
tel./fax: 042/641015

ARCHITECTURAL DETAILS OF THE STAGE

1. Architectural portal - 12 x 7,35 m
2. Internal width of the stage - 17 m
3. Depth of the stage - 21,40 m
4. Height of the cord - 22m
5. Soft portal - width - 11 m
6. Curtain
 - one half - 20 x 9 m
 - whole - 40 x 9 m

MAIN CURTAIN

Movement - horizontally
Movement speed - adjustable - from 0,1 to 1 m/sec., by mechanical drive

SOUNDPROOF CURTAINS

Movement - up - down

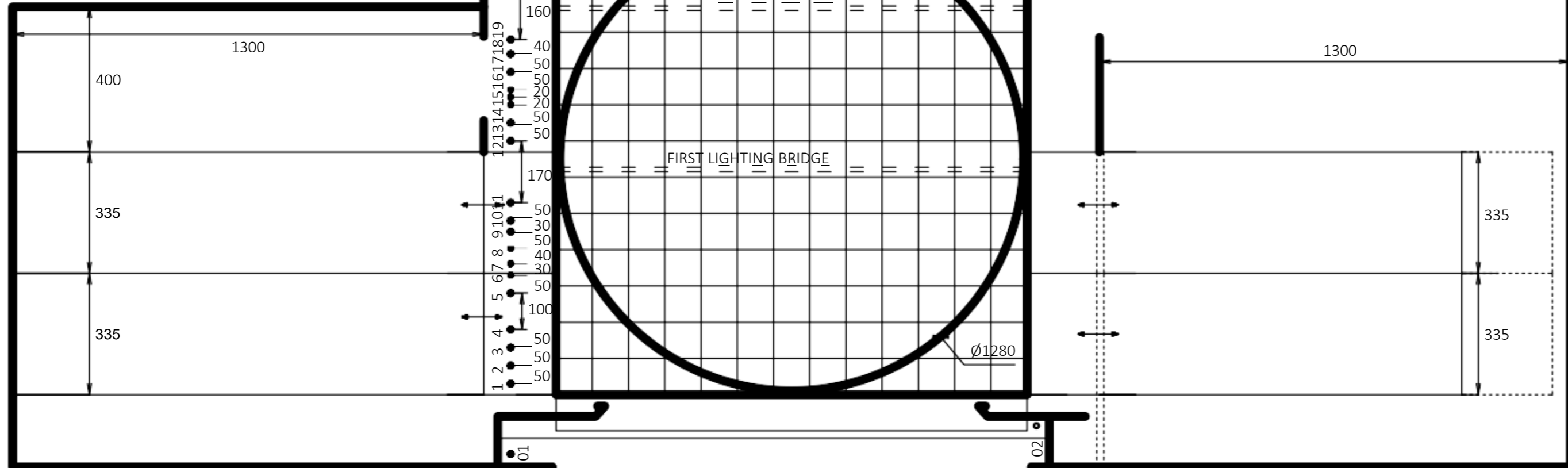
MAIN STAGE

Size - 13 x 13 m
Movement - reciprocating, in north-south direction
Motion speed - from 0,12 to 0,25 m/sec.
Load capacity

- static - 300 kg/sq. m.
- dynamic - 100 kg/sq. m.

MANUAL STERLETS- 24 PCS

1 sterlet behind of the curtain
23 sterlets behind the curtain - 11 before the first bridge, 8 sterlets after the first bridge and 4 sterlets after the second bridge
- load capacity 250 kg



PROSCENIUM

Size - 12 x 1,86 m

FIRST EQUALIZING PODIUM

(falling podium)
Size - 13 x 1,70 m
Load capacity

- static - 300 kg/sq. m.
- dynamic - 100 kg/sq. m.
- lowest position - 0,55 m

ROTATING CIRCLE

Built into the main stage - $\Phi 12,80$ m
Movement - rotational, in both directions
The circle rotates, no matter in which position is the main scene and whether it is inclined or not.
Load capacity

- static - 300 kg/sq. m.
- dynamic - 100 kg/sq. m.

 Motion speed - from 0,1 to 1 m/sec
The main scene and the rotating circle, can be tilted together up to 10 %

ORCHESTRAL PODIUM

Size - 15,20 x 4,61 m
Motion speed - от 0,02 до 0,04 m/sec.
Load capacity

- static - 300 kg/sq. m.
- dynamic - 100 kg/sq. m.

PORTAL BRIDGE

Width - 12 m
Maximal lift - 6,7 m

LIGHTING BRIDGE

2 bridges- one between 11th and 12th sterlet and the other is between 19th and 20th sterlet

ELECTRICAL STERLETS

1 sterlet behind of the curtain

- load capacity 400 kg
- motion speed - 0,35 m/sec

GALLERIES

4 galleries with different elevations
- The first gallery start from 8m

FIRST LEFT SCENE

Size - 13 x 3,35 m
Load capacity

- static - 300 kg/sq. m.
- dynamic - 100 kg/sq. m.

 Motion speed - from 0,05 to 0,5 m/sec.
Max trajectory - 16 m

SECOND LEFT SCENE

Size - 13 x 3,35 m
Load capacity

- static - 300 kg/sq. m.
- dynamic - 100 kg/sq. m.

 Motion speed - from 0,05 to 0,5 m/sec.
Max trajectory - 16 m

FIRST RIGHT SCENE

Size - 13 x 3,35 m
Load capacity

- static - 300 kg/sq. m.
- dynamic - 100 kg/sq. m.

 Motion speed - from 0,05 to 0,5 m/sec.
Max trajectory - 16 m

FIRST EXTENDING SCENE

Size - 3,35 x 3 m
Load capacity

- static - 300 kg/sq. m.
- dynamic - 100 kg/sq. m.

 Movement - manual

SECOND RIGHT SCENE

Size - 13 x 3,35 m
Load capacity

- static - 300 kg/sq. m.
- dynamic - 100 kg/sq. m.

 Motion speed - from 0,05 to 0,5 m/sec.
Max trajectory - 16 m

SECOND EXTENDING SCENE

Size - 3,35 X 3 m
Load capacity

- static - 300 kg/sq. m.
- dynamic - 100 kg/sq. m.

 Movement - manual